



Affitto Estate Agents proudly presents to the market this spacious three bedroom apartment, situated within walking distance to shops, gyms, George Elliot Hospital and a Train Station.

The accommodation comprises of a bright and airy lounge, a modern kitchen, 3 large bedrooms and a family bathroom.

The open plan lounge / kitchen creates a large open space, with plenty of room for all necessary furniture. The modern kitchen comes complete with wall and base units creating ample storage, a stainless steel sink with mixer tap, gas hob, oven and hood.

Each bedroom is bright and spacious with 2 double rooms and 1 single. All three of the rooms have a window allowing natural light into the property and enough space for all necessary furniture. (Each bedroom will be carpeted before move in)

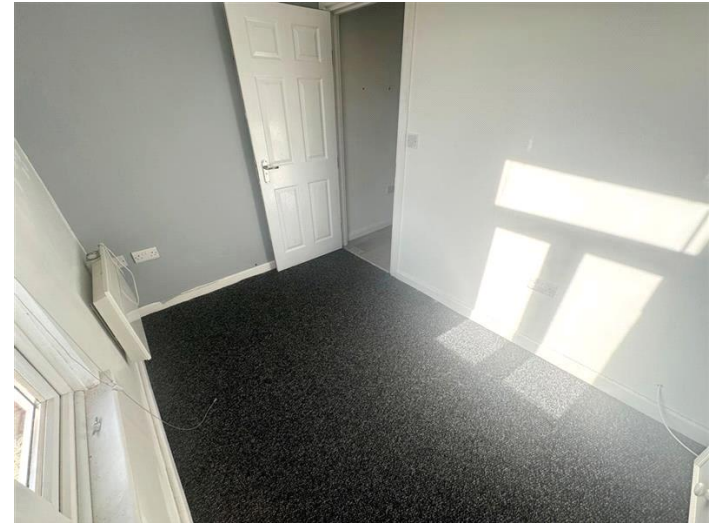
The modern family bathroom comes complete with a 3 piece suite, comprising of a shower, W/C and hand basin.

Get in touch with us today!

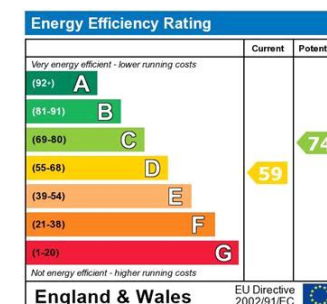
Deposit: £1,096.15

Holding Deposit: £219.23





Whilst every effort is made to ensure the accuracy of these details, it should be noted that the measurements are approximate only. Floorplans are for representation purposes only and prepared according to the RICS Code of Measuring Practice by our floorplan provider. Therefore, the layout of doors, windows and rooms are approximate and should be regarded as such by any prospective tenant.



The energy efficiency rating is a measure of the overall efficiency of a home. The higher the rating the more energy efficient the home is and the lower the fuel bills will be.