



Affitto Estate Agents are proud to offer to the market this spacious 3 bedroom Semi-Detached Home with a large garden and a garage located in a sought-after location in Leicester.

Upon entering the property you step into an entrance hallway providing access to the spacious lounge, W/C and the staircase.

The lounge is of a good size with a window to the front and the rear of the property providing a warm, bright and airy feel to the property allowing natural light into the living room.

Straight ahead there is a good-sized kitchen which incorporates wall shelving and base units proving ample storage. The kitchen gives access to the large, low-maintenance rear garden which has the advantage of a patio area.

On the first floor the landing provides access to all bedrooms and the family bathroom. There are two double bedrooms and a spacious single bedroom. The master bedroom benefits from having a built-in wardrobe.

Finally, a family bathroom with W/C, a full-size bathtub as well as a shower over the bath and a vanity unit.

The property comes with gas central heating and double glazing.

All local amenities are close by and there are excellent transport links in and around the City of Leicester.

CONTACT US NOW TO ARRANGE A VIEWING!

Features

- ***** SPACIOUS RENOVATED FAMILY HOME *****
- *****THREE BEDROOMS*****
- Driveway For 2 Cars
- Large Garden
- Modern Bathroom and Kitchen
- Large Living Room
- Gas Central Heating
- Double Glazing

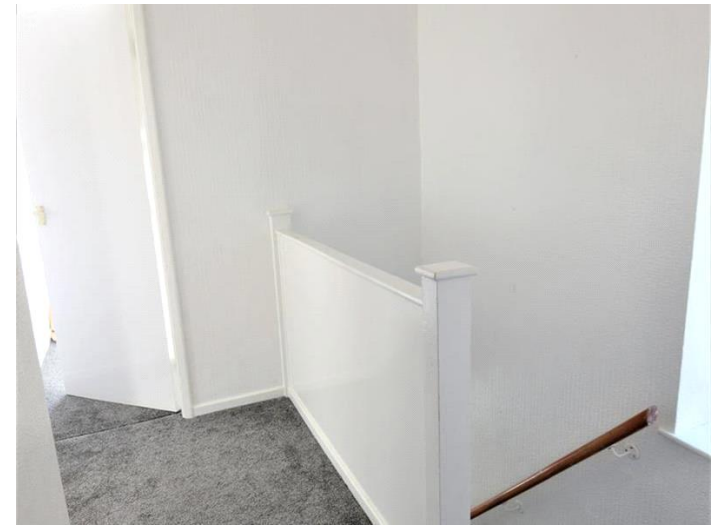
Council Tax Band: B

Deposit: £1,050

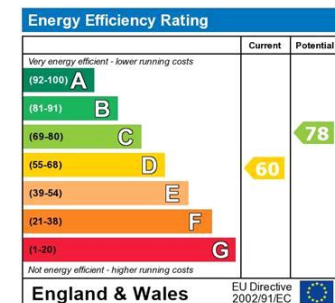
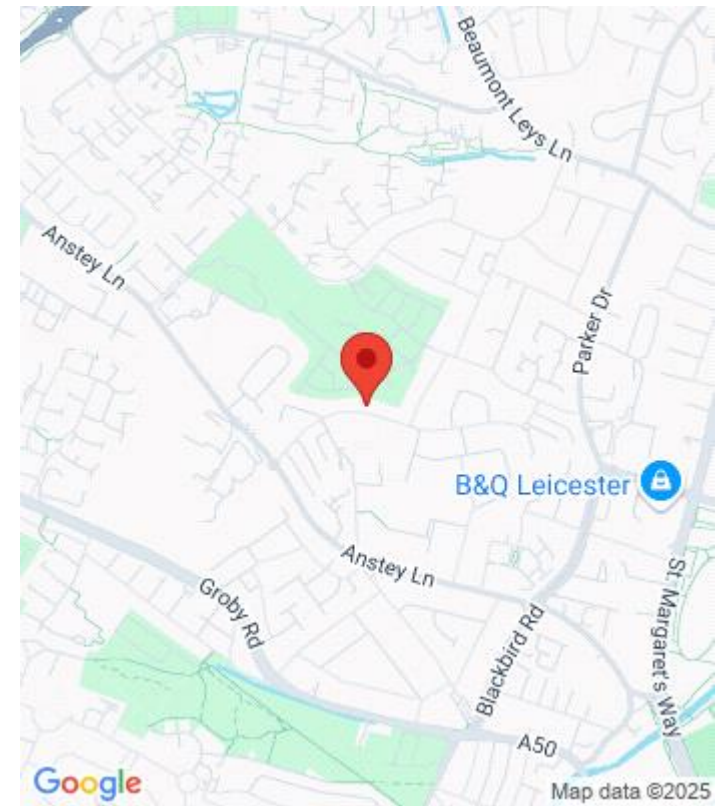
Holding Deposit: £242.30

Parking options: Off Street

Garden details: Private Garden



Whilst every effort is made to ensure the accuracy of these details, it should be noted that the measurements are approximate only. Floorplans are for representation purposes only and prepared according to the RICS Code of Measuring Practice by our floorplan provider. Therefore, the layout of doors, windows and rooms are approximate and should be regarded as such by any prospective tenant.



The energy efficiency rating is a measure of the overall efficiency of a home. The higher the rating the more energy efficient the home is and the lower the fuel bills will be.