



Affitto Estate agents proudly presents this modern three-bedroom family home, available to move the beginning of March!!

This beautifully presented property offers spacious and contemporary living, making it the perfect family home.

Upon entering, you are welcomed into a bright and inviting lounge, providing a comfortable space for relaxation. The stylish fitted dining kitchen boasts ample storage units, work surfaces, a stainless steel sink with a mixer tap, a gas hob, oven, extractor hood, washing machine, integrated fridge freezer, and an integrated dishwasher. Additionally, a convenient guest cloakroom is located on the ground floor.

Upstairs, the master bedroom features fitted wardrobes and a private en-suite shower room. The second bedroom is a spacious double, while the third bedroom is a comfortable single. The family bathroom is fitted with a modern three-piece suite, including a shower for added convenience.

This home benefits from underfloor heating on the ground floor and high-quality carpets throughout the first floor. Fitted blinds and curtains are included in all rooms, and for added security, the property is equipped with an intruder alarm and CCTV.

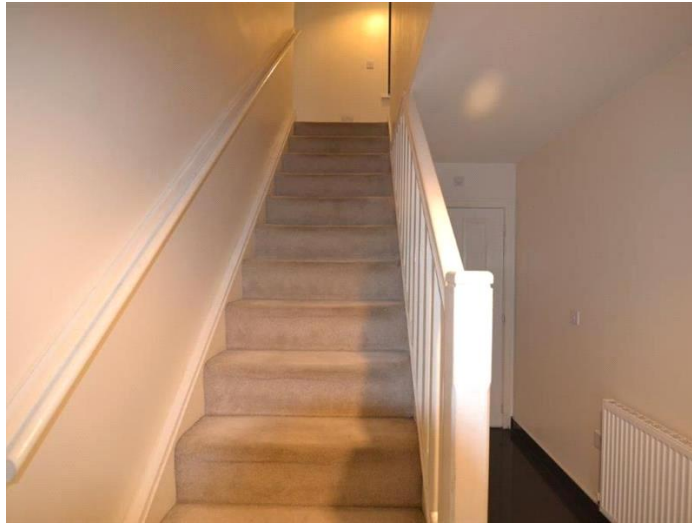
This stunning home is available for immediate viewing and move-in the beginning of March. Contact us to arrange a viewing!

Deposit: £1,378.84

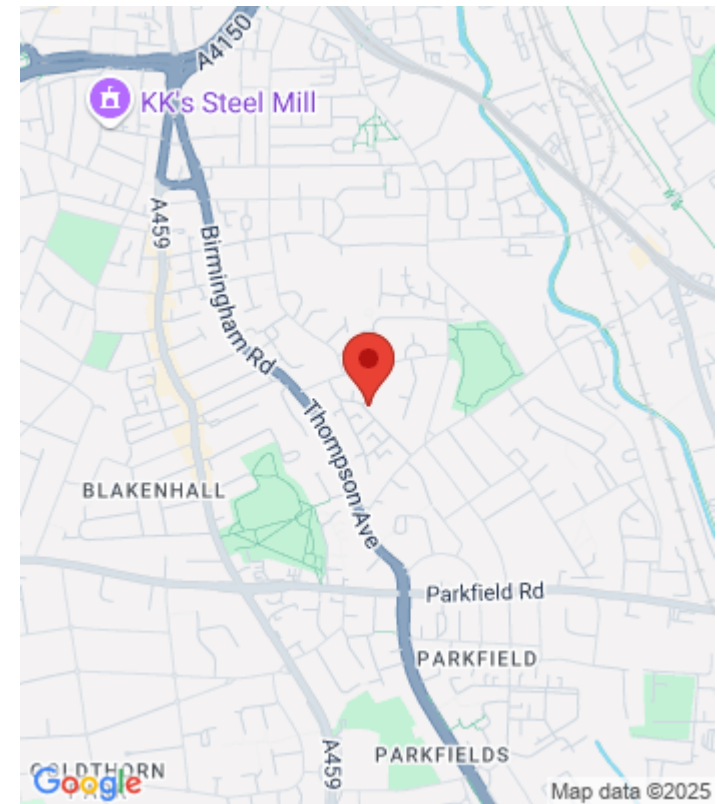
Holding Deposit: £275.76

Parking options: Driveway

Garden details: Private Garden



Whilst every effort is made to ensure the accuracy of these details, it should be noted that the measurements are approximate only. Floorplans are for representation purposes only and prepared according to the RICS Code of Measuring Practice by our floorplan provider. Therefore, the layout of doors, windows and rooms are approximate and should be regarded as such by any prospective tenant.



Energy Efficiency Rating		Current	Potential
Very energy efficient - lower running costs			
(92-100) A			94
(81-91) B		83	
(69-80) C			
(55-68) D			
(39-54) E			
(21-38) F			
(1-20) G			
Not energy efficient - higher running costs			
England & Wales		EU Directive 2002/91/EC	

The energy efficiency rating is a measure of the overall efficiency of a home. The higher the rating the more energy efficient the home is and the lower the fuel bills will be.