



Affitto Estate Agents are proud to bring to the market this well-presented newly-refurbished shared house consisting of 5 double bedrooms, all having en-suite bathrooms. The property benefits from having a communal lounge area as well as a low-maintenance outdoor area.

This modern shared house on Blundell Avenue, Cleethorpes is a stone's throw away from the football stadium, easy access to the town centre, close to supermarkets, good takeaways, numerous community shops, and a bus stop with direct access to Cleethorpes, Grimsby, and surrounding areas with easy access to all major roads in the area. On-street parking is free without any time restrictions.

A mixture of good sized bedrooms decorated in cool modern colours each furnished with lush grey carpet, double bed with a quality mattress, wardrobe, chest of drawers, bedside table, blackout blinds, TV and high-speed Wi-Fi.

The modern kitchen contains one oven, microwave, kettle, lots of cooking equipment, pots, pans, cutlery, utensils, fridge, freezer, and laundry facilities, also has a communal lounge area with a breakfast bar.

The property has full central heating, double-glazed throughout and soundproofed to ensure your space – stays your space.

The rear of the property has a low maintenance area for smoking outside and a secure bike store with secure access from the rear.

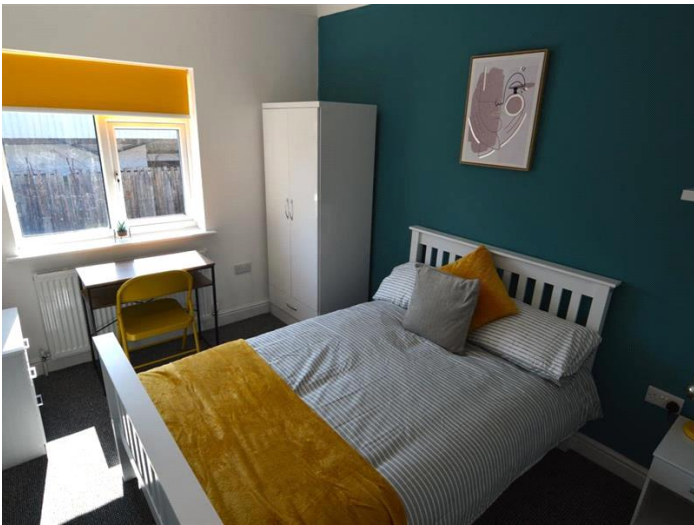
All utilities and high-speed Wi-Fi are included in the rent price and the shared areas of the house are cleaned on a fortnightly basis.

Deposit: £240

Holding Deposit: £120

Garden details: Private Garden





Whilst every effort is made to ensure the accuracy of these details, it should be noted that the measurements are approximate only. Floorplans are for representation purposes only and prepared according to the RICS Code of Measuring Practice by our floorplan provider. Therefore, the layout of doors, windows and rooms are approximate and should be regarded as such by any prospective tenant.

