



Affitto Estate Agents are proud to offer to the market this ONE BEDROOM room with all bills included in a house share, which is beautifully designed luxury room in this Executive House Share. Our aim is to make your living as comfortable as possible.

The room is fully furnished including, double bed, mattress, wardrobe, chest of drawers, desk, chair and HD TVs. Connected with latest Hi-speed WIFI Technology, Direct Network access and HDMI connectivity.

Because we believe that space and beauty shouldn't come at the cost of practicality, all rooms have their own en suite shower rooms.

Rooms are designed to be easily cleaned with hard flooring as standard, and with taking environment in mind are fitted with Green Energy LED lighting

Kitchen/ Diner Bright large beautifully modelled communal Kitchen Diner, designed to be practical, fully equipped with Dishwasher, Induction Hob, Extractor, Fridge freezers, laundry facilities including Washing Machine and Dryer, Storage Cupboards, work surfaces and Breakfast Bar and Stools. Automatic Green Energy LED Lighting Property Latest HIVE Heating and Hot water Technology, for added security, intercom secure entrance and CCTV surrounding the house, to give you extra peace of mind!

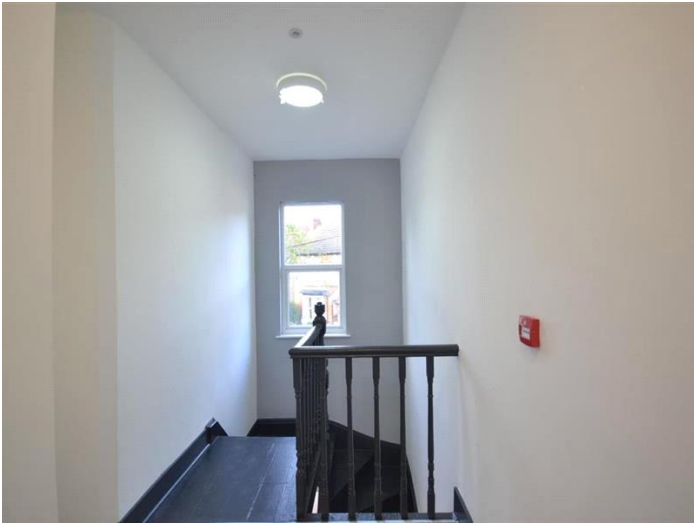
Full off road parking and landscaped garden. if you're a health fanatic and have a bike, don't worry, we have fitted off street bike racks

Location Avondale Road is situated minutes from the city centre, with excellent transport links by car, bus, train and metro.

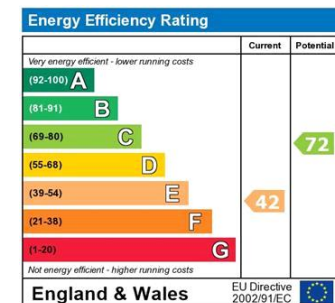
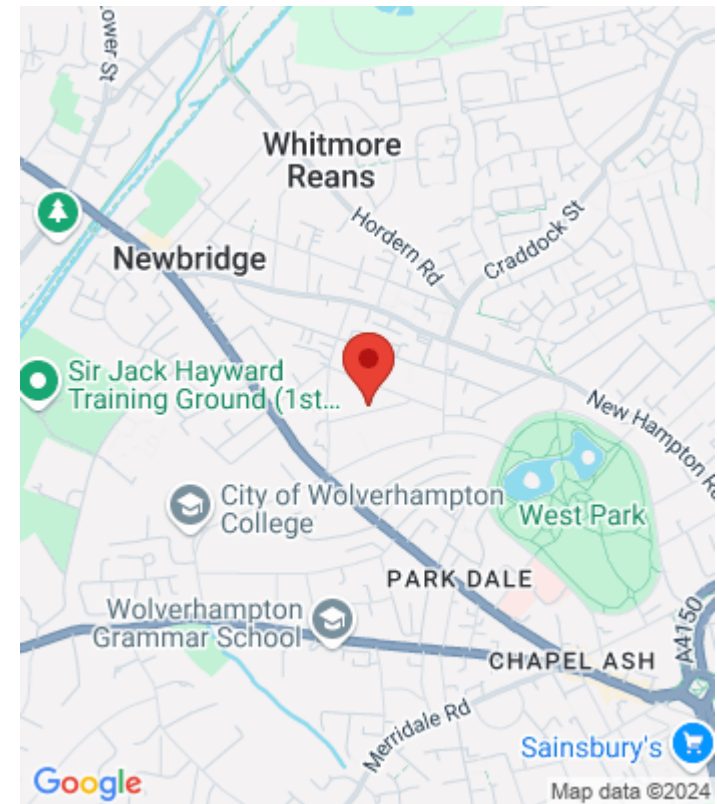
Council Tax Band: c

Deposit: £400

Holding Deposit: £126.92



Whilst every effort is made to ensure the accuracy of these details, it should be noted that the measurements are approximate only. Floorplans are for representation purposes only and prepared according to the RICS Code of Measuring Practice by our floorplan provider. Therefore, the layout of doors, windows and rooms are approximate and should be regarded as such by any prospective tenant.



The energy efficiency rating is a measure of the overall efficiency of a home. The higher the rating the more energy efficient the home is and the lower the fuel bills will be.