



Affitto Estate Agents are delighted to introduce to the market this FULLY FURNISHED SIX bedroom home with a DRIVEWAY in Nuneaton. Located close to the Town Centre and all local amenities. This property has been refurbished to a high standard and provides generous, well-planned family accommodation.

The large family lounge provides a cosy and comfortable feel, with modern décor and a stylish fireplace.

A large patio door brightens the dining room, giving it a light and airy feel. The kitchen leads on from the dining room. This room includes a breakfast bar, with 3 stools, lots of storage space and a large fridge freezer. A coffee machine is also included, as well as a dishwasher, washing machine and dryer, some of which is located in the utility room next to the kitchen.

A beautifully decorated bedroom is located on the ground floor, with a double bed and desk/dresser. The two windows in this room look out onto the garden and brighten up the space.

A separate W/C is also located downstairs.

Upstairs, you are welcomed by 5 beautifully decorated bedrooms.

The main bedroom has a large en suite, with a ceiling shower, and lots of storage space. Each room is furnished with everything you need including wardrobes, drawers, bed side tables and tasteful décor.

Bedroom 1 - 1 SuperKing Bed

Bedroom 2 - 1 Double Bed

Bedroom 3 - 2 Single Beds

Bedroom 4 - 2 Single Beds

Bedroom 5 - 1 Single Bed

Bedroom 6 - 1 Double Bed (downstairs)

The bathroom upstairs has a corner shower, and a large, light-up mirror. This room also provides lots of storage, making it a perfect family bathroom.

This property has a generous size driveway for THREE/FOUR vehicles.

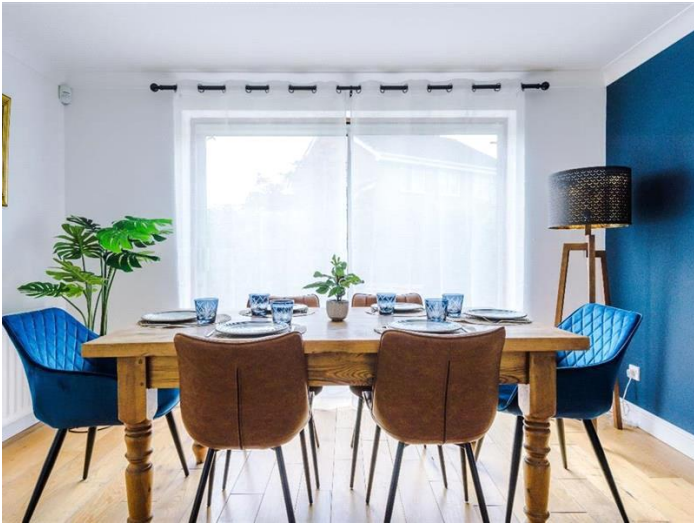
To the rear of this property, there is a sizeable garden which finishes off this property extremely well. This area is very private and enclosed and is a great space to have available.

Gloucester Close is ideally located for working professionals and families as all local amenities are close by and there are excellent transport links.

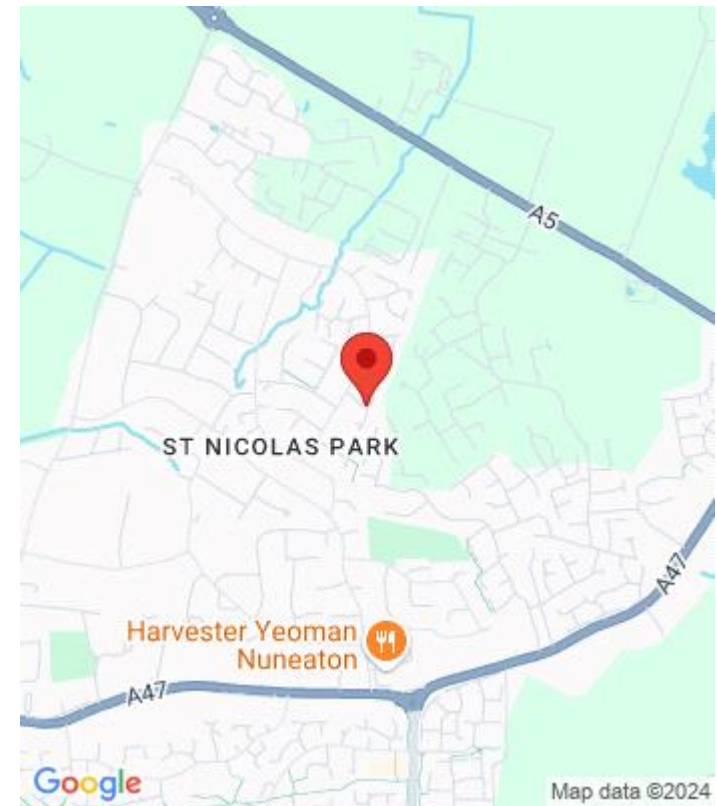
Contact us today to book a viewing on this beautiful property!

Deposit: £2,275

Holding Deposit: £525



Whilst every effort is made to ensure the accuracy of these details, it should be noted that the measurements are approximate only. Floorplans are for representation purposes only and prepared according to the RICS Code of Measuring Practice by our floorplan provider. Therefore, the layout of doors, windows and rooms are approximate and should be regarded as such by any prospective tenant.



Energy Efficiency Rating		Current	Potential
Very energy efficient - lower running costs			
(92-100) A			
(81-91) B			
(69-80) C			
(55-68) D		71	80
(39-54) E			
(21-38) F			
(1-20) G			
Not energy efficient - higher running costs			
England & Wales		EU Directive 2002/91/EC	

The energy efficiency rating is a measure of the overall efficiency of a home. The higher the rating the more energy efficient the home is and the lower the fuel bills will be.